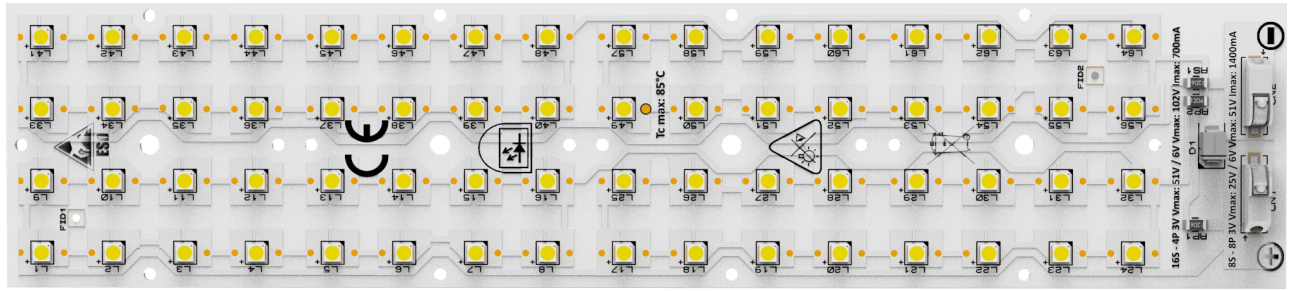




## PRODUCT PHOTO



## SPECIFICATIONS

- Default driving method is constant current input
- This modul can be used 16 series x4 parallels or 8 series x 8 parallels options.
- This module is compatible with Zhaga Standart Book 15.
- CCT Range from 2000°K up to 6500°K
- Luminous flux range from 2879 lm to 10261 lm
- Efficacy of the module up to 181 lm/W
- CRI 80 is standart, CRI 70 and CRI 90 are available
- Outstanding system color tolerance MacAdam 3 over the full operating area
- Simple installation (e.g. screw)
- Long life-time > 60,000 hours
- 5 years guarantee at specified conditions



For your orders please call us:  
**+90 444 27 33**

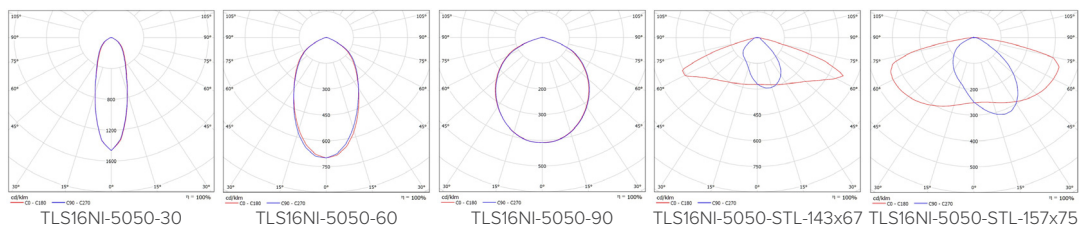
## APPLICATIONS



Street Lighting

Industrial And  
Warehouses  
Lighting

## PHOTOMETRY



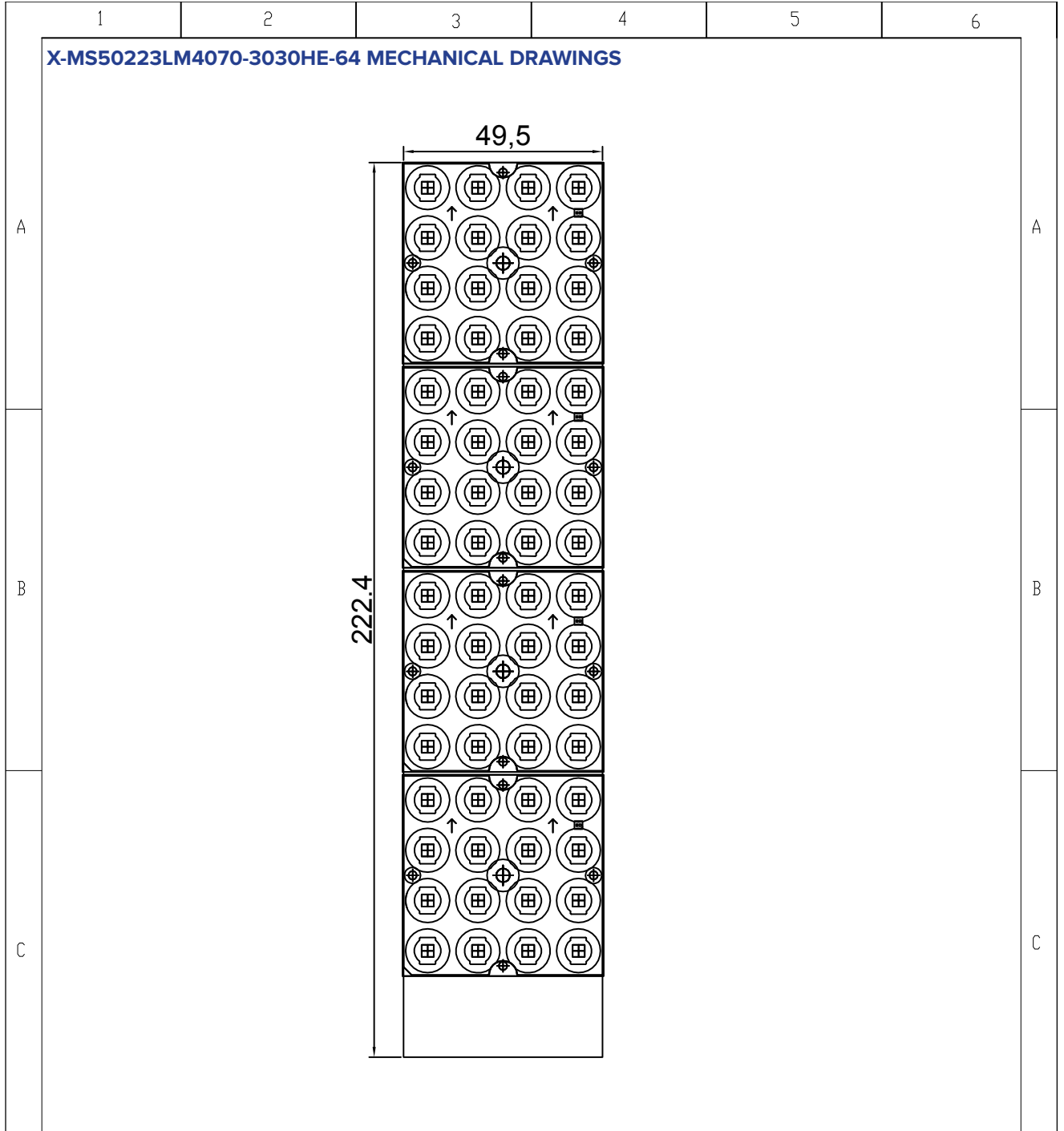


## DRIVING CURRENT VS LUMEN OUTPUT SPECIFICATION


Common Characteristic [@Tj] : 85°C ;			
Module Code	X-MS50223LM4070-3030HE-64		
PCB Material	ALU	Electrical Connection	
Operating Temperature (°C)	-40 ~ +85	Parallel	4
Storage Temperature (°C)	-40 ~ +55	Series	16
Thermal Conductivity (W/m-K)	1>	LED Quantity	64
LED	LUXEON 3030 HE +		
Correlated Color Temperature (CCT)	4000K		
Color Rendering Index (CRI)	70+		
Module Operating Voltage (V)	43,68	44,48	45,60
Module Operating Current (mA)	350	500	700
Branch Operating Current (mA)	88	125	175
Module Power (W)	15,29	22,24	31,92
Module Light Output (lm)	3.226	4.515	6.161
Module Efficiency (lm/W)	211	203	193
LED	LUXEON 3030 2D Sq.		
Correlated Color Temperature (CCT)	4000K		
Color Rendering Index (CRI)	80+		
Module Operating Voltage (V)	92,32	95,36	99,04
Module Operating Current (mA)	350	500	700
Branch Operating Current (mA)	88	125	175
Module Power (W)	32,31	47,68	69,33
Module Light Output (lm)	5.622	7.724	10.261
Module Efficiency (lm/W)	174	162	148
LED	NFSW757GT-V3_R8000		
Correlated Color Temperature (CCT)	4000K		
Color Rendering Index (CRI)	80+		
Module Operating Voltage (V)	45,44	47,36	49,92
Module Operating Current (mA)	350	500	700
Branch Operating Current (mA)	88	125	175
Module Power (W)	15,90	23,68	34,94
Module Light Output (lm)	2.879	4.002	5.416
Module Efficiency (lm/W)	181	169	155
LED	NF2W757GR-V3_R8000		
Correlated Color Temperature (CCT)	4000K		
Color Rendering Index (CRI)	80+		
Module Operating Voltage (V)	90,24	93,76	98,08
Module Operating Current (mA)	350	500	700
Branch Operating Current (mA)	88	125	175
Module Power (W)	31,58	46,88	68,66
Module Light Output (lm)	5.085	6.798	9.543
Module Efficiency (lm/W)	161	145	139

The table below shows how to Module Light Output changes depending on CCT (°K)

LED	Lumen Output Multiplier						
	2000°K	2500°K	2700°K	3000°K	4000°K	5000°K	6500°K
NFSW757GT-V3_R8000	<b>0,85</b>	<b>0,93</b>	1,06	1,13	1,16	1,09	1,05
NF2W757GR-V3_R8000	<b>0,67</b>	X	0,96	0,98	1,00	1,02	0,99
LUXEON 3030 2D Sq.	<b>0,81</b>	X	1,08	1,07	1,12	1,14	1,17
LUXEON 3030 HE +	X	X	X	1,37	1,40	1,40	1,30



SERBEST ÖLÇÜ TOLERANSLARI -DIN 2768-1 / General Tolerances for linear and angular dimensions ( DIN ISO 2768-1)

0.5 up to 3mm	over 3 up to 6mm	over 6 up to 30mm	over 30 up to 120mm	over 120 up to 400mm	over 400 up to 1000mm
± 0.1	± 0.1	± 0.2	± 0.3	± 0.5	± 0.8
Stock code No		MALZEME (MATERIAL)	AGIRLIK (WEIGHT)		
Revision	00	XXX	XXX		
Date	10.12.2019	TLS-001-10L50223NC30-64-T1.6			OLÇEK / SCALE
Sheet					A4
Drawn By	Kaan ALTINTEN				
Checked By	Ibrahim OKMEN				
Approved By	Mesut CINAR				

TLS Teknoloji Sanayi ve Dis Ticaret A.S

This drawing is our property. It cant be reproduced or communicated without our written agreement.

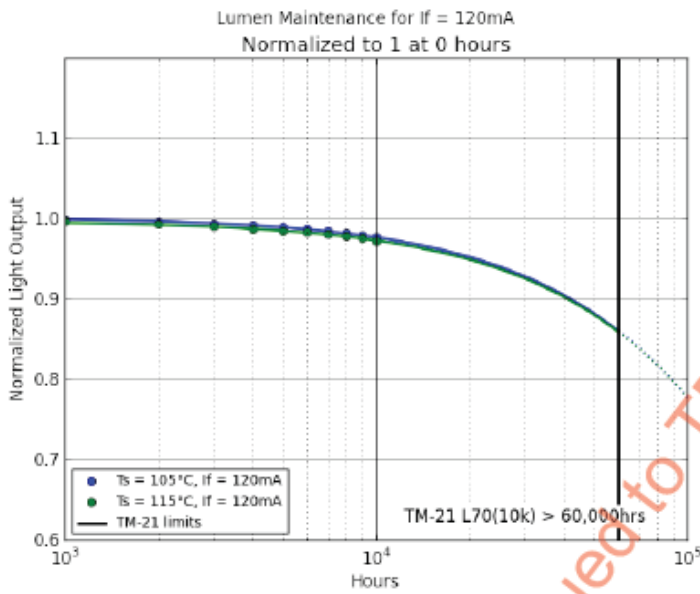


LIFE TIME

MODEL NUMBER: LUXEON 3030

Normalized Flux Statistics for  $I_f = 120\text{mA}$

	0hrs	1000hrs	2000hrs	3000hrs	4000hrs	5000hrs	6000hrs	7000hrs	8000hrs	9000hrs	10000hrs	alpha	B	L70	
Ts=Tair=115°C	median =	1.0000	0.9969	0.9944	0.9920	0.9882	0.9850	0.9833	0.9805	0.9782	0.9756	0.9730			
	average =	1.0000	0.9973	0.9939	0.9912	0.9879	0.9848	0.9831	0.9808	0.9785	0.9756	0.9728	2.4816e-06	0.9977	142,789
	st dev =	0.0000	0.0018	0.0021	0.0025	0.0031	0.0035	0.0035	0.0036	0.0037	0.0038	0.0040	TM-21 L70(10k) > 60,000hrs		
	min =	1.0000	0.9945	0.9904	0.9887	0.9824	0.9778	0.9762	0.9736	0.9715	0.9691	0.9659			
	max =	1.0000	1.0008	0.9984	0.9953	0.9929	0.9913	0.9889	0.9866	0.9842	0.9818	0.9788			
Ts=Tair=105°C	median =	1.0000	0.9984	0.9961	0.9944	0.9920	0.9890	0.9866	0.9841	0.9824	0.9797	0.9771			
	average =	1.0000	0.9985	0.9960	0.9942	0.9919	0.9895	0.9870	0.9847	0.9824	0.9796	0.9770	2.5336e-06	1.0022	141,655
	st dev =	0.0000	0.0017	0.0016	0.0016	0.0016	0.0018	0.0020	0.0023	0.0028	0.0031	0.0032	TM-21 L70(10k) > 60,000hrs		
	min =	1.0000	0.9952	0.9929	0.9907	0.9890	0.9859	0.9835	0.9811	0.9780	0.9740	0.9725			
	max =	1.0000	1.0016	0.9984	0.9976	0.9952	0.9936	0.9920	0.9904	0.9888	0.9857	0.9833			



Delta u'v' for  $I_f = 120\text{mA}$

	0hrs	1000hrs	2000hrs	3000hrs	4000hrs	5000hrs	6000hrs	7000hrs	8000hrs	9000hrs	10000hrs	
Ts=Tair=115°C	median =	0.0000	0.0007	0.0009	0.0013	0.0014	0.0017	0.0022	0.0024	0.0026	0.0028	0.0031
	average =	0.0000	0.0007	0.0010	0.0013	0.0015	0.0018	0.0021	0.0024	0.0026	0.0028	0.0032
	st dev =	0.0000	0.0001	0.0001	0.0001	0.0002	0.0002	0.0002	0.0002	0.0002	0.0002	0.0002
	min =	0.0000	0.0005	0.0008	0.0011	0.0013	0.0015	0.0019	0.0023	0.0023	0.0025	0.0029
	max =	0.0000	0.0010	0.0013	0.0017	0.0020	0.0023	0.0025	0.0029	0.0031	0.0033	0.0037
Ts=Tair=105°C	median =	0.0000	0.0006	0.0007	0.0011	0.0013	0.0017	0.0019	0.0021	0.0024	0.0027	0.0030
	average =	0.0000	0.0006	0.0008	0.0011	0.0013	0.0017	0.0019	0.0022	0.0025	0.0028	0.0030
	st dev =	0.0000	0.0002	0.0002	0.0002	0.0003	0.0003	0.0002	0.0003	0.0003	0.0003	0.0003
	min =	0.0000	0.0002	0.0006	0.0009	0.0008	0.0012	0.0017	0.0019	0.0020	0.0022	0.0024
	max =	0.0000	0.0013	0.0014	0.0020	0.0024	0.0027	0.0028	0.0031	0.0035	0.0038	0.0042

## LEGAL NOTICE

Product information provided by TLS Teknoloji Sistemleri San ve Dış Tic AŞ ("TLS") in this document is believed to be correct and accurate. TLS reserves the right to change/correct the specifications and other data or information relating to products without notice but TLS accepts no liability for errors that may appear in this document, howsoever occurring, or liability arising from the use or application of any information or data provided herein. Neither the supply of such information, nor the purchase or use of products conveys any licence or permission under patent, copyright, trademark or other intellectual property right of TLS or third parties.

Products sold by TLS are subject to its standard Terms and Conditions of Sale that are available on request. No warranty is given that products do not infringe the intellectual property rights of third parties, and furthermore, the use of products in certain ways or in combination with TLS, or non-TLS furnished equipments/components may infringe intellectual property rights of TLS.

The purpose of this document is to provide information only and it may not be used, applied or reproduced (in whole or in part) for any purpose nor be taken as a representation relating to the products in question. No warranty or guarantee express or implied is made concerning the capability, performance or suitability of any product, and information concerning possible applications or methods of use is provided for guidance only and not as a recommendation. The user is solely responsible for determining the performance and suitability of the product in any application and checking that any specification or data it seeks to rely on has not been superseded.

Products are intended for normal commercial applications. For applications requiring unusual environmental requirements, extended temperature range, or high reliability capability (e.g. military, or medical applications), special processing/testing/conditions of sale may be available on application to TLS.

## CONTACT

### **TLS Teknoloji Sistemleri San ve Dış Tic AŞ**

Akçaburgaz Mahallesi 3080. Sokak No:5 Esenyurt / İstanbul / TURKEY

info@tsteknoloji.com  
+90 444 27 33