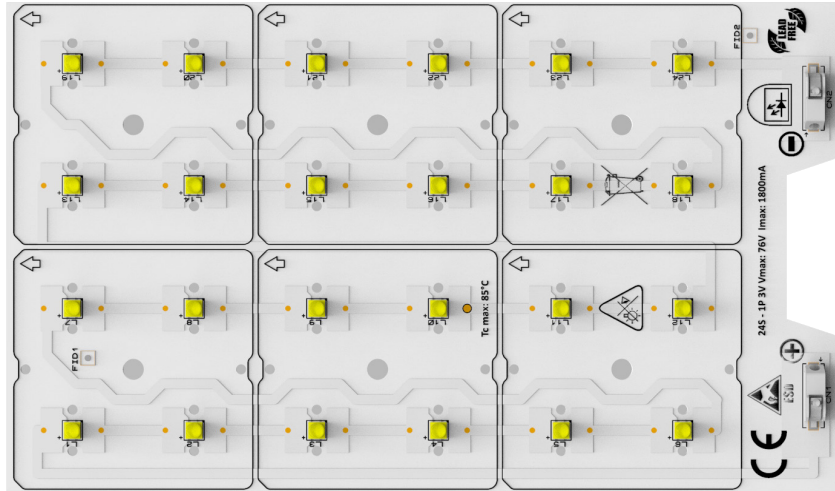


PRODUCT PHOTO



SPECIFICATIONS

- Default driving method is constant current input.
- CCT Range from 2000K up to 6500K
- This module is standard and can be connected as 24 Series 1 Parallel.
- Luminous flux range from 7.544 lm to 14.225 lm
- Efficacy of the module up to 166 lm/W
- CRI 70 is standard, CRI 80 and 90 CRI are available
- Outstanding system color tolerance MacAdam 3 over the full operating area
- Simple installation (e.g. screw)
- Long life-time > 60,000 hours
- 5 years guarantee at specified conditions



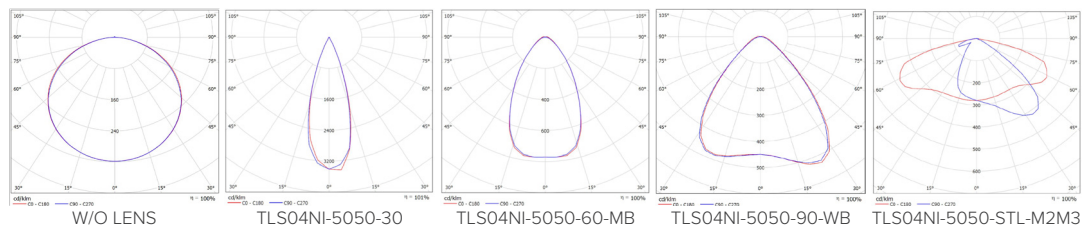
For your orders please call us:
+90 444 27 33

APPLICATIONS



Street Lighting High Bay Lighting Low Bay Lighting Area Lighting

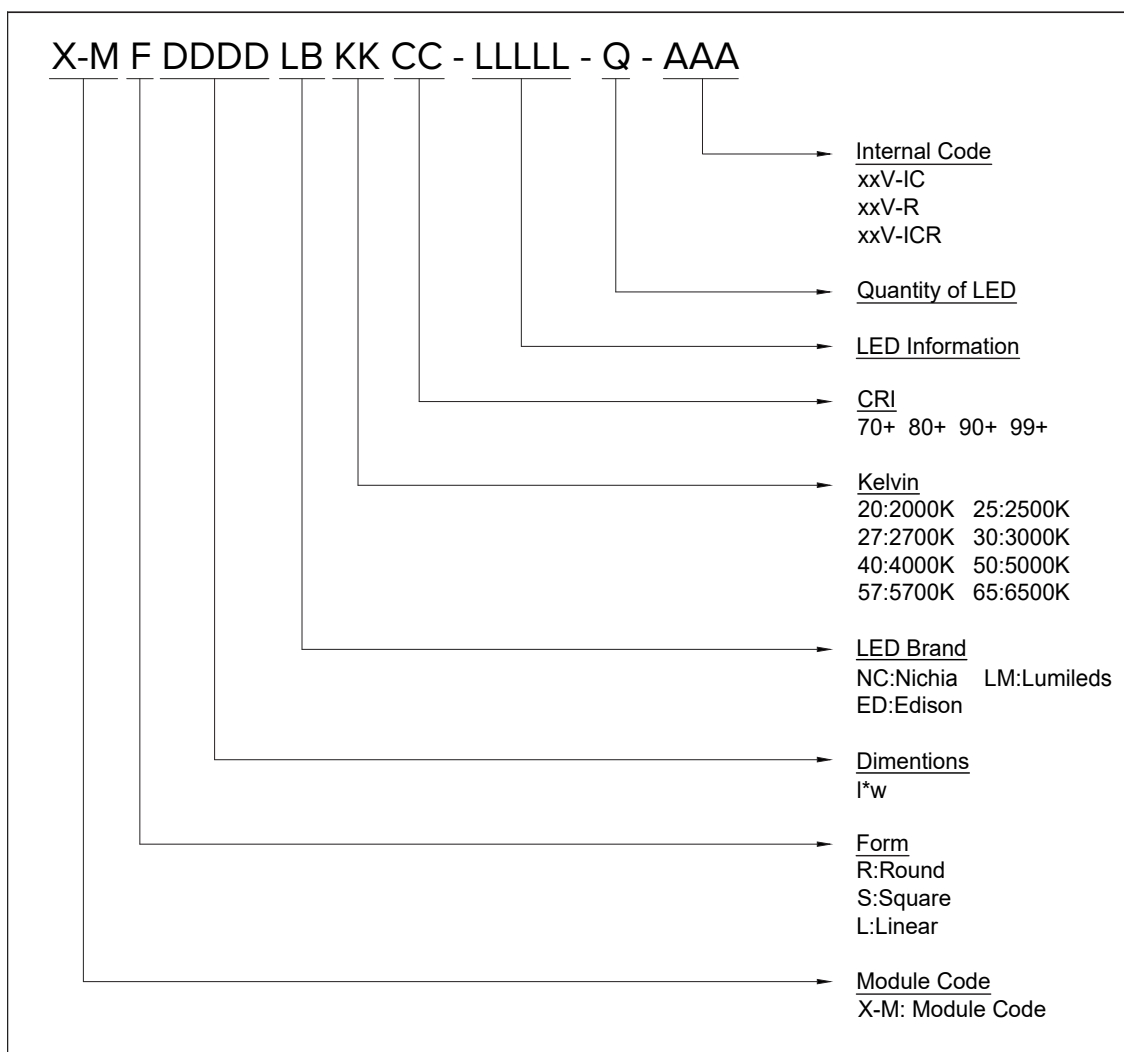
PHOTOMETRY

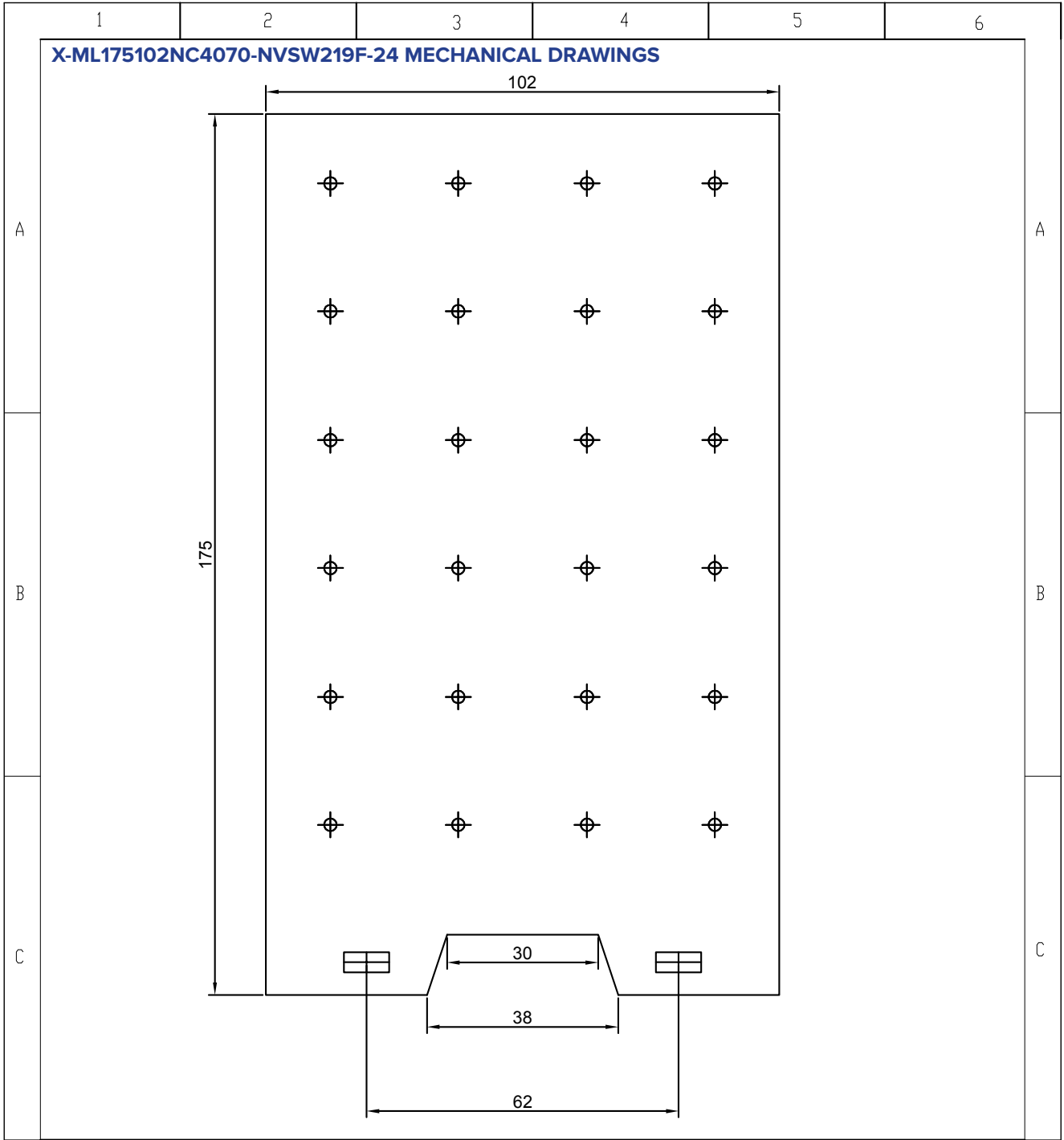


TECHNICAL DATA

Beam Angle	120°
Ambient temperature range	-25° ~ +55°C
Tc max	100°C
Max. DC forward current	1400mA
Typical voltage of LED Module at max current	72 V
Insulation test voltage	2kV
ESD classification	Class 1
Risk group (EN 62471:2008)	RG2
Type of protection	IP00

ORDERING INFORMATIONS





SERBEST ÖLÇÜ TOLERANSLARI -DIN 2768-1 / General Tolerances for linear and angular dimensions (DIN ISO 2768-1)

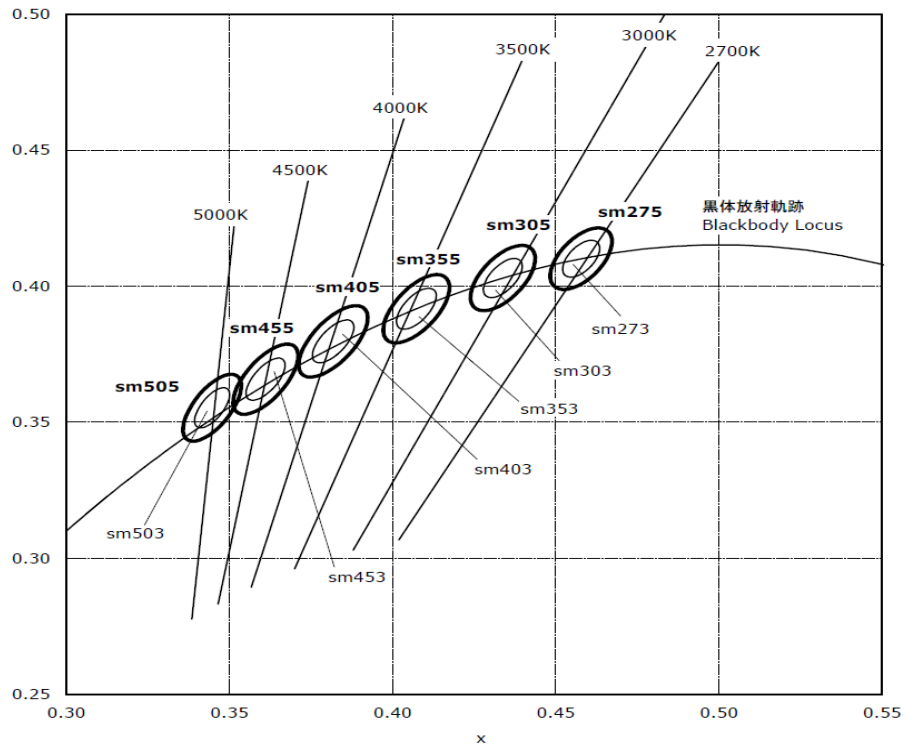
0.5 up to 3mm	over 3 up to 6mm	over 6 up to 30mm	over 30 up to 120mm	over 120 up to 400mm	over 400 up to 1000mm
± 0.1	± 0.1	± 0.2	± 0.3	± 0.5	± 0.8

Stock code No		MALZEME (MATERIAL)	AGIRLIK (WEIGHT)		
Revision	00	XXX	XXX		
Date	08.01.2021	X-MS175102NC4070-NVSW219F-24		OLÇEK / SCALE	A4
Sheet					
Drawn By	Kaan ALTINTEN				
Checked By	Ibrahim OKMEN				
Approved By	Utku OZTURK				

TLS Teknoloji Sanayi ve Dis Ticaret A.S

This drawing is our property. It cant be reproduced or communicated without our written agreement.

CCT AND BINNING INFORMATION



LIFE TIME

MODEL NUMBER: NVSW219F

LM-80 Test Report

This LM-80 testing is performed in accordance with IES LM-80-15.

Part No. NVSW219F

Issue Date:	November 4, 2020	Revision Date:	-
Test Initiation Date:	March 29, 2018	Test Completion Date:	June 19, 2020
Test Duration:	10,000 hours	Report No.:	SQETMS534401

Customer Information:

Company Name: Nichia Corporation
Address: 491-100, Oka, Kaminaka-cho, Anan-shi, Tokushima, 774-8601, JAPAN

Description of Test Samples:

Manufacturer's Name: Nichia Corporation
Classification: LED Package
Part Name: White LED
Part No.: NVSW219F
Nominal CCT: 2700 K

Test Summary:

Data Set	Case Temperature [°C]	Ambient Temperature [°C]	Drive Current [mA]	Luminous Flux Maintenance at 10K hours [%]	Chromaticity Shift ($\Delta u'v'$) at 10K hours	TM-21 Projection $L_{70}(10K)$ [hours]	TM-21 Projection $L_{80}(10K)$ [hours]	TM-21 Projection $L_{90}(10K)$ [hours]
1	55	> 50	700	98.6	0.0005	> 60000	> 60000	> 60000
2	55	> 50	1500	97.6	0.0007	> 60000	> 60000	> 60000
3	85	> 80	700	98.3	0.0005	> 60000	> 60000	> 60000
4	85	> 80	1200	97.7	0.0010	> 60000	> 60000	> 60000
5	85	> 80	1500	96.9	0.0015	> 60000	> 60000	> 60000
6	105	> 100	700	97.6	0.0007	> 60000	> 60000	> 60000
7	105	> 100	1200	95.8	0.0019	> 60000	> 60000	32100
8	105	> 100	1500	83.6	0.0019	15200	11200	7720 *

* The L_p value is reached experimentally in the course of LM-80 testing.

LEGAL NOTICE

Product information provided by TLS Teknoloji Sistemleri San ve Dış Tic AŞ ("TLS") in this document is believed to be correct and accurate. TLS reserves the right to change/correct the specifications and other data or information relating to products without notice but TLS accepts no liability for errors that may appear in this document, howsoever occurring, or liability arising from the use or application of any information or data provided herein. Neither the supply of such information, nor the purchase or use of products conveys any licence or permission under patent, copyright, trademark or other intellectual property right of TLS or third parties.

Products sold by TLS are subject to its standard Terms and Conditions of Sale that are available on request. No warranty is given that products do not infringe the intellectual property rights of third parties, and furthermore, the use of products in certain ways or in combination with TLS, or non-TLS furnished equipments/components may infringe intellectual property rights of TLS.

The purpose of this document is to provide information only and it may not be used, applied or reproduced (in whole or in part) for any purpose nor be taken as a representation relating to the products in question. No warranty or guarantee express or implied is made concerning the capability, performance or suitability of any product, and information concerning possible applications or methods of use is provided for guidance only and not as a recommendation. The user is solely responsible for determining the performance and suitability of the product in any application and checking that any specification or data it seeks to rely on has not been superseded.

Products are intended for normal commercial applications. For applications requiring unusual environmental requirements, extended temperature range, or high reliability capability (e.g. military, or medical applications), special processing/testing/conditions of sale may be available on application to TLS.

CONTACT

TLS Teknoloji Sistemleri San ve Dış Tic AŞ

Akçaburgaz Mahallesi 3080. Sokak No:5 Esenyurt / İstanbul / TURKEY

info@tsteknoloji.com
+90 444 27 33