

# TE~~X~~RUN

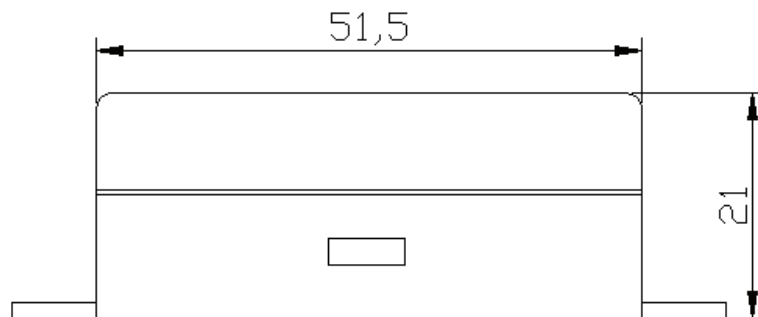
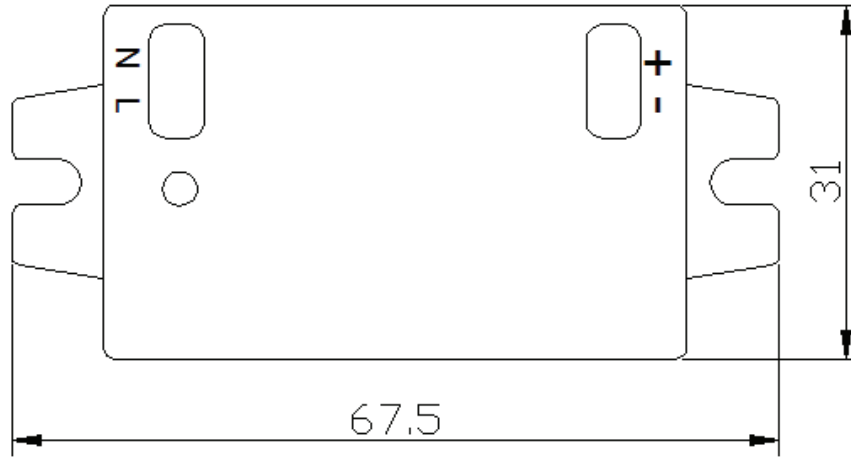
"Technology is Running"

## MLA6-350-11-17V-IP20 Constant Current LED Driver

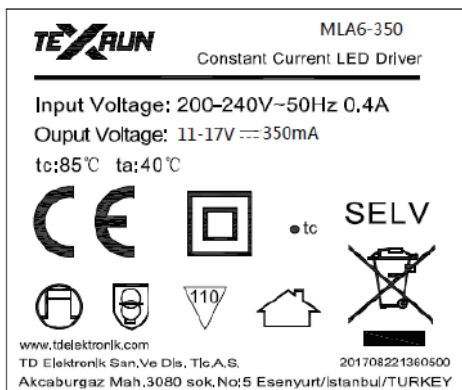


MECHANICAL DRAWINGS

AC Input: UL1007 22AWG / 200mm  
DC Output: UL1007 22AWG / 200mm



LABEL



PACKING

Outside Box: 400L\*270W\*250H  
Quantity: 200PCS/CTN



**ELECTRICAL SPECIFICATIONS**

	Item	Technical Norm
<b>INPUT</b>	Max. Output Wattage	6W
	Rated Input Voltage	200-240VAC
	Range Of Input Voltage	180-264VAC
	Frequency (hz)	50 Hz
	Power Factor	NA
	Current	0.4A MAX. @Full Load
	Start-up Time	< 0.5S for ERP @Full Load
	Inrush Current	30A MAX. @Full Load, 240VAC
	Unload Power Consumption	≤0.5W
<b>OUTPUT</b>	Unload Voltage	27VDC MAX.
	Output Voltage	11-17V
	Load Voltage Rang	NA
	Constant Current	350mA
	Voltage Accuracy	NA
	Current Regulation	≤5%@Full Load
	Hold-up Time	NA
	Efficiency in full load	≥80%@Full Load ,240VAC
<b>DIMMING</b>	Ripple	NA
	Dimmable Or Not	NA
	Dimmable Or Not	NA
<b>PROTECTION</b>	Dimming Current Range	NA
	Over Load Protection	105-150% Protection Type: Auto Restore 27VDC MAX.
	Short Circuit Protection	Protection Type: Auto Restore
	Over Temperature Protection	Protection Type: Auto Restore
<b>HI-POT</b>	Input - Output (V.AC)	3000V/5mA/1 min
	Input - FG (V.AC)	NA
	Output - FG (V.AC)	NA
<b>ISOLATION RESISTANCE</b>	Leakage Current	< 0.5mA(240VAC)
	Input - Output (V.AC)	≥10MΩ@500VDC
	Input - FG (V.AC)	NA
<b>ENVIRONMENT LIFE SPAN</b>	Output - FG (V.AC)	NA
	Operating Temperature	-10°C...+40°C
	tc	85°C
	Storage Temperature	-20°C...+60°C
	Humidity	20%-90%RH
<b>FEATURE</b>	Life time	> 30,000h @40°C
	HSF requirement	RoHS
	Dimension	67.5*31*21(LXWXH)mm
	Approval	CE
<b>SEFETY &amp; EMC</b>	Safety Standards	EN 61347-1; EN61347-2-13 EN60598-1; EN60598-2-6
	EMI	EN55015 / EN61000-3-2 / Class C EN61000-3-3 EN61547; EN61000-4-2 8KV; 4KV;
	EMS	Performance Criteria B EN61000-4-5 1000V; Performance Criteria C