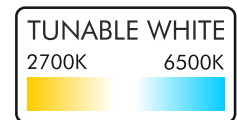
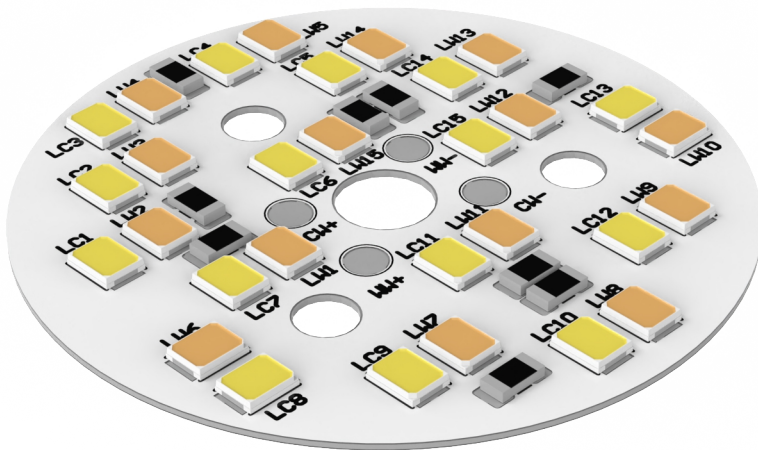


EC-R44-0503-L128-TN

New Experience Of Lighting

- Lumileds Luxeon 2835 SA-A1 3V
- Constant Color, MacAdams Step 3
- Homogeneous illumination
- Optional PCB Material Selection



- Substrate:ALU/FR4/CEM1/CEM3
- PCB Thickness:1.0/1.6 mm
- Copper Weight:35Um/70Um
- Surface Treatment:HASL/OSP
- Thermal Conductivity:1W/1.2W/1.5W/2W
- Breakdown Voltage:2000V

Electrical Specification

Product Code	Colour (k)	Luminous Flux TC : 25 °C Tj : 25 °C (lm)	Forward Voltage Flux Tj : 25 °C (v)	Serial	Parallel	Power Consumption TC : 25 °C Tj : 25 °C (w)	Efficacy TC : 25 °C Tj : 25 °C (lm/w)	CRI (Ra)
EC-R44-0503-L128-TN-27-80	2700	611	13.95	5	3	3.49	175.07	80
EC-R44-0503-L128-TN-65-80	6500	647	13.95	5	3	3.49	185.38	80
Operation Mode at 350 mA								
EC-R44-0503-L128-TN-27-80	2700	833	14.25	5	3	4.99	166.93	80
EC-R44-0503-L128-TN-65-80	6500	879	14.25	5	3	4.99	176.15	80
Operation Mode at 500 mA								
EC-R44-0503-L128-TN-27-80	2700	1151	14.65	5	3	7.33	157.02	80
EC-R44-0503-L128-TN-65-80	6500	1211	14.65	5	3	7.33	165.21	80

**These values are estimated.



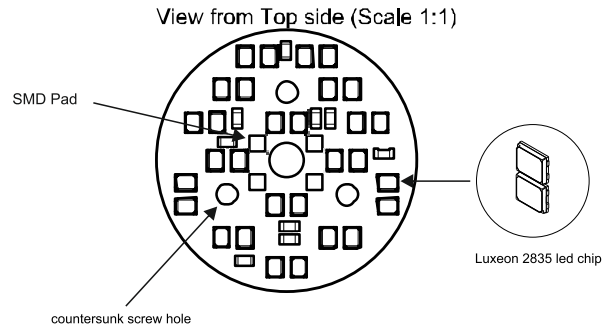
EC-R44-0503-L128-TN

Mechanical Specification

New Experience Of Lighting

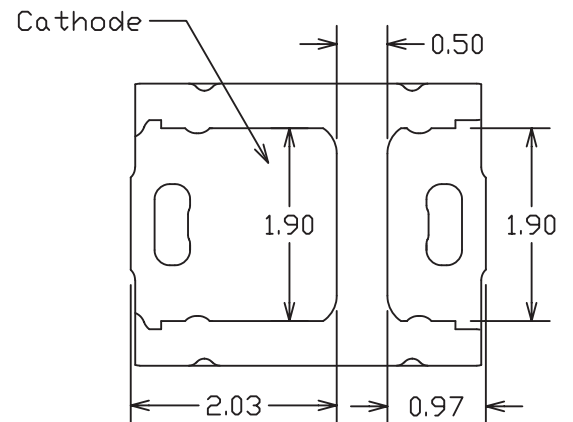
PCB Specification

- Length:44 mm
- Width:44 mm
- Height:2.25 mm
- Thickness of PCB: 1.6 mm



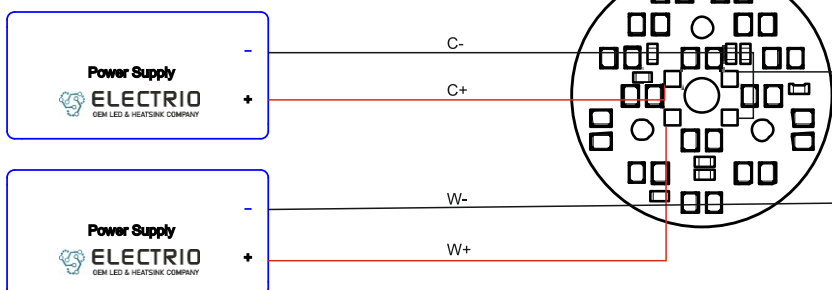
LEDs Specification

- CRI:80
- IF-Type:65 mA
- IF-Max:200 mA
- Tj-Typ(sorting), Tj-Max:45°C-85°C



Connection Diagram

View from Top side (Scale 1:1)

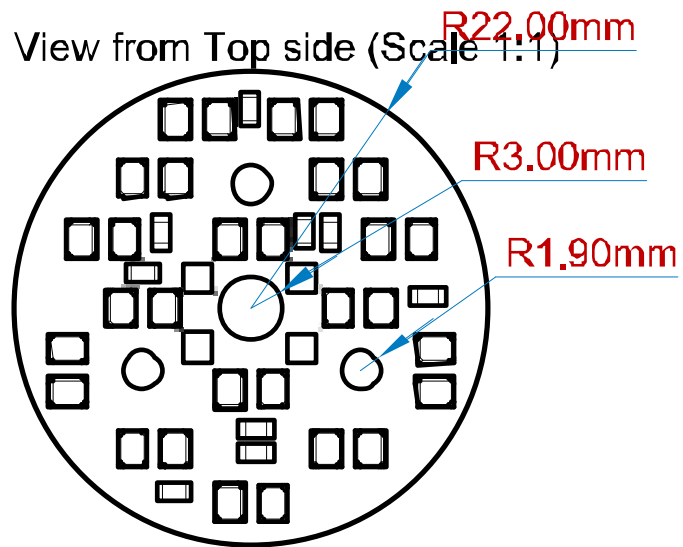


EC-R44-0503-L128-TN

Mechanical Dimensions

New Experience Of Lighting

View from Front side (Scale 1:1)



View from Bottom side (Scale 1:1)

